

# **SEND Inspection**

## **Written Statement of Action (WSoA)**

Presentation to Burys Governors  
Association

2 November 2017

Karen Dolton – Bury Council



# Background

- From 2014 there are new duties on Local Authority Areas for children and young people with special educational needs and/or disabilities (SEND):
  - *The Children and Families Act 2014 (and regulations)*
  - *The Special Educational Needs and Disability Code of Practice: 0 to 25 years: statutory guidance published by the Department for Education and Department of Health*
- Ofsted and the Care Quality Commission (CQC) are responsible for inspecting local areas on their effectiveness in fulfilling the new duties.



# SEND Inspection

- Ofsted & CQC jointly inspected Bury from 12 – 16 June 2017 to judge the effectiveness of the local area in implementing the SEND Reforms
- Three key questions / lines of enquiry for inspectors:
  - The effectiveness of the local area in identifying children and young people with SEND
  - The effectiveness of the local area in meeting the needs of children and young people with SEND
  - The effectiveness of the local area in improving the outcomes of children and young people with SEND



# SEND Inspection Findings

- Inspection messages were hard hitting; significant change is required & current ways of working cannot continue.
- Eight areas of weakness identified by Ofsted/CQC:
  1. The absence of strategic leadership and vision to drive the reforms
  2. The lack of understanding and practice of co-production at the heart of all strategic considerations
  3. The failure to ensure joined-up working so that all agencies and services are working together for children and young people who have special educational needs and/or disabilities



# SEND Inspection Findings (cont)

## Weaknesses (cont)

4. The poor sharing of important information from health services both between different health disciplines and other external agencies
5. The widespread unawareness and misunderstanding of the local offer
6. The inaccurate and inconsistent identification of special educational needs and/or disabilities at school level
7. The ignorance of children and young people's EHC plans by some key health practitioners
8. The defective arrangements for joint commissioning

# SEND Inspection Requirements

- Due to the significant areas of weakness in the local area's practice, Her Majesty's Chief Inspector requires Bury to produce a Written Statement of Action (WSOA)
- Bury Council and Bury Clinical Commissioning Group are jointly responsible for submitting the statement by 31 October 2017
- Her Majesty's Chief Inspector & the Secretary of State need to be satisfied that the outcomes of the inspection are owned by the seniors leaders in Bury and have confidence in the actions proposed to address the weaknesses



# Written Statement of Action (WSoA)

## Weakness 1: Absence of Strategic Leadership to drive reforms

SP 1.1	To improve the Strategic leadership and Vision for SEND across the Council, CCG, partners and providers including parents
SP 1.2	To implement a joint strategic framework for SEND 0-25 across the Council & CCG
SP 1.3	To implement a SEND 0-25 Integrated Service Delivery Model

## Weakness 2: Lack of understanding and practice of coproduction

SP 2.1	Embed a culture of co-production across all organisations & for all strategic considerations
SP 2.2	Involve parents and children and young people in service development and the commissioning of services

## Weakness 3: Failure to ensure joined-up working

SP 3.1	To develop an 0-25 integrated model of SEND systems and processes across agencies and services
SP 3.2	To improve the outcomes for young people transitioning into adult hood
SP 3.3	To develop a workforce strategy for staff in SEND frontline and supporting roles



# WSoA (cont 2)

## Weakness 4: Poor sharing of health information

SP 4.1	To establish an Information Governance Protocol between all partner agencies to support the "tell it once" culture
SP 4.2	To develop an ICT / digital strategy which works towards a single IT system for integrated health assessments which supports the "tell it once" culture
SP 4.3	To establish and embed systems and procedures in order that information within Health Services is shared in an appropriate and timely manner

## Weakness 5: Unawareness and misunderstanding of the Local Offer

SP 5.1	To develop the Local Offer with children, young people and families so used by all including professionals
SP 5.2	To improve the accessibility of the Local Offer for children, parents and families
SP 5.3	To raise the awareness of the Local Offer by children, parents and families
SP 5.4	To develop the Local Offer as a tool to inform planning and commissioning of services





# WSoA (cont 3)

## **Weakness 6: Inaccurate and inconsistent identification of needs at school level**

SP 6.1	To create a culture of inclusiveness using a restorative practice model embedded in all schools in Bury
SP 6.2	To implement a robust SEN graduated support offer in the borough in partnership with schools
SP 6.3	To develop SEMH Partnership Strategy to support schools
SP 6.4	To develop and autism strategy
SP 6.5	To improve transition arrangements from school at 16 (and 19) for SEND Young People both in and out of borough

## **Weakness 7: Ignorance of EHC Plans by some health professionals**

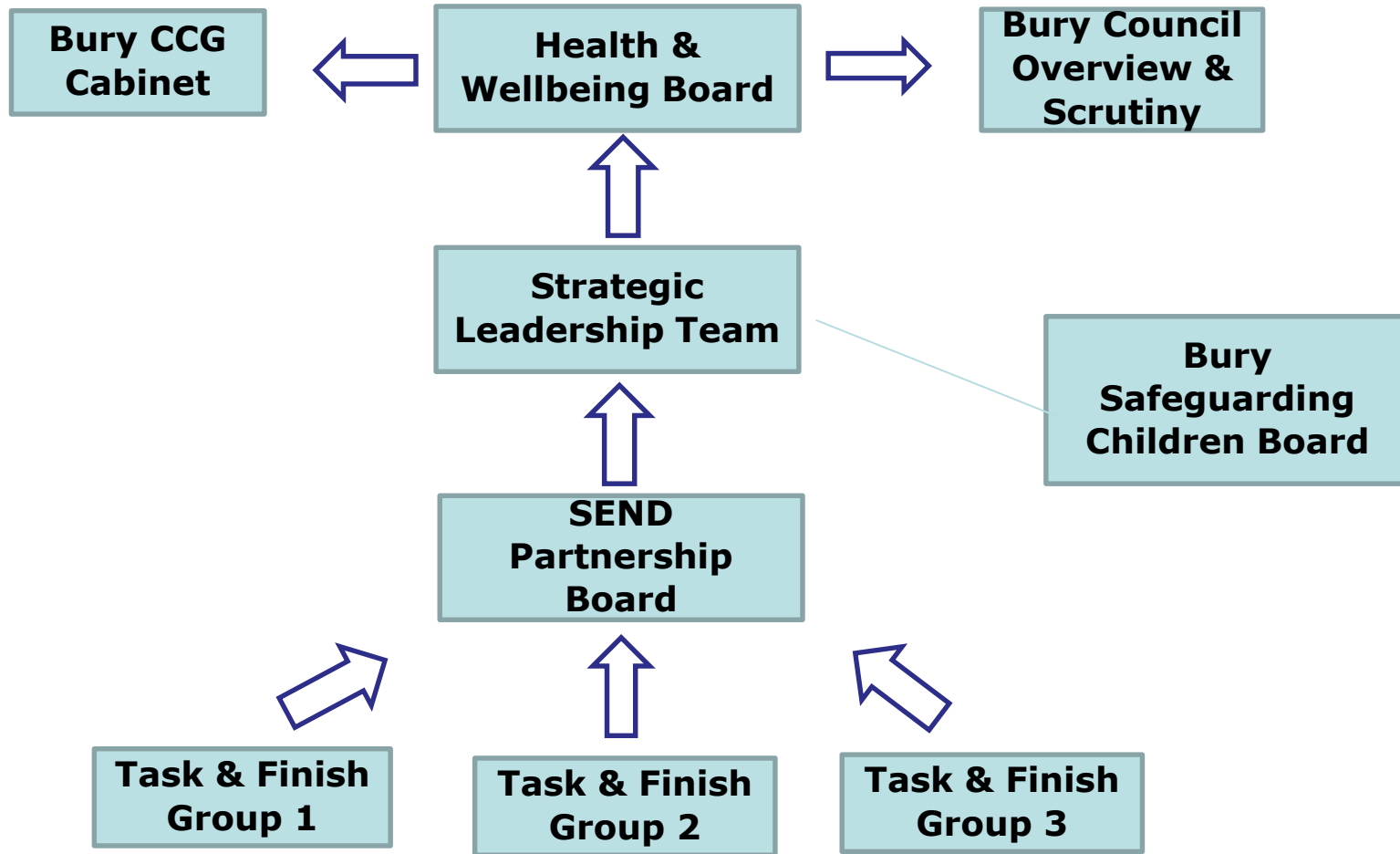
SP 7.1	To increase health practitioners and social care practitioners' awareness and understanding of EHCP Plans, their role in contributing to the development of the EHCP and supporting delivery of outcomes in the EHCP
--------	--

## **Weakness 8: Defective arrangements for joint commissioning**

SP 8.1	To develop a jointly owned commissioning strategy for SEND across health, social care and education services 0 -25
SP 8.2	To improve the joint commissioning arrangements for SEND services 0 - 25



# Governance Framework for SEND



# Next Steps

- Oversight and monitoring of WSoA with the SEND Partnership Board
- Meeting on 31 October 2017 will agree work streams and sponsor / lead (Council & CCG) to take forward the development of work-plans in support of Strategic Priorities
- WSoA also incorporates SEN Review findings